

15A CORDEND GFCI
30-0061A

Temperature Sensor

High-Limit Sensor

33-0012-R2

P31

P4

B

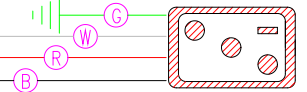
W

Light (2-Pin AMP)

120V - 15A
Pump 1 (RED Receptacle)

P22 [RED]

P1

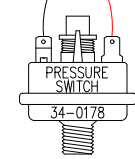
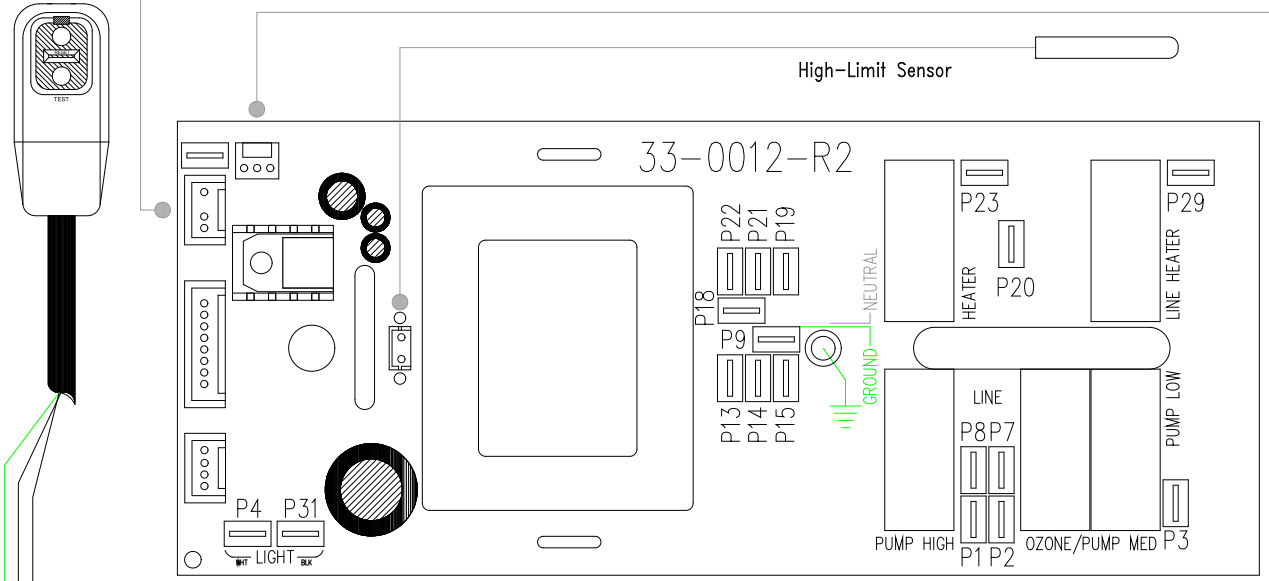
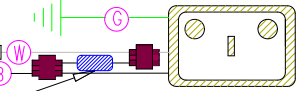


120V - 1A
Ozone (YELLOW Receptacle)

P3

P19 [YEL]

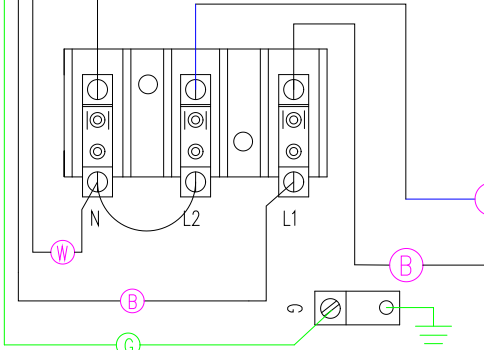
SNUBBER ASSY.



1

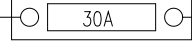
INCOMING POWER TERMINAL BLOCK

P18



FUSE BLOCK & FUSE

P8



P20

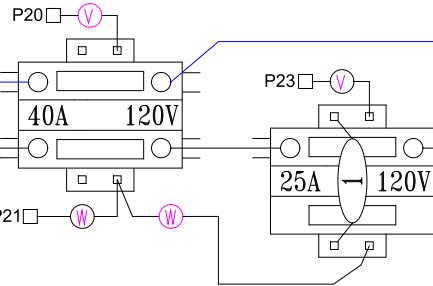
P23

P21

P23

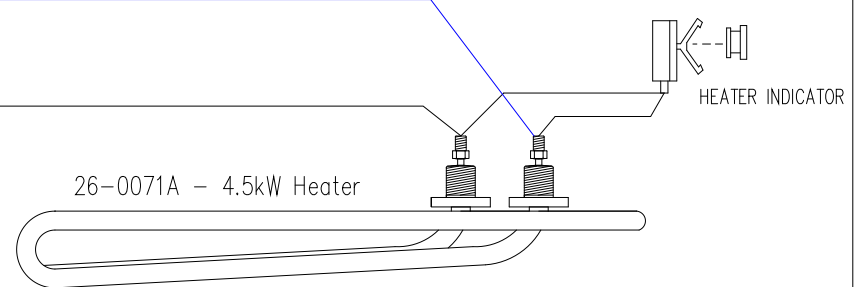
BI

B



26-0071A - 4.5kW Heater

HEATER INDICATOR



Manufacture Notes:

- #1 - MAIN COMPONENT VOLTAGE CONVERSION DONE AT INCOMING TERMINAL BLOCK
- #2 - FOR 240V OPERATION REMOVE JUMPER BETWEEN L2 AND N. CONNECT L1, L2, N, GROUND. ADJUST CURRENT LIMITING IN LLP TO "HC"

Drawn	MBS	Rev	1
Date	02.16.10		
Diagram No.	0634		

Wire Color Code	
B - Black	G - Green
Br - Brown	Bl - Blue
R - Red	V - Violet
O - Orange	W - White
Y - Yellow	Gr - Grey